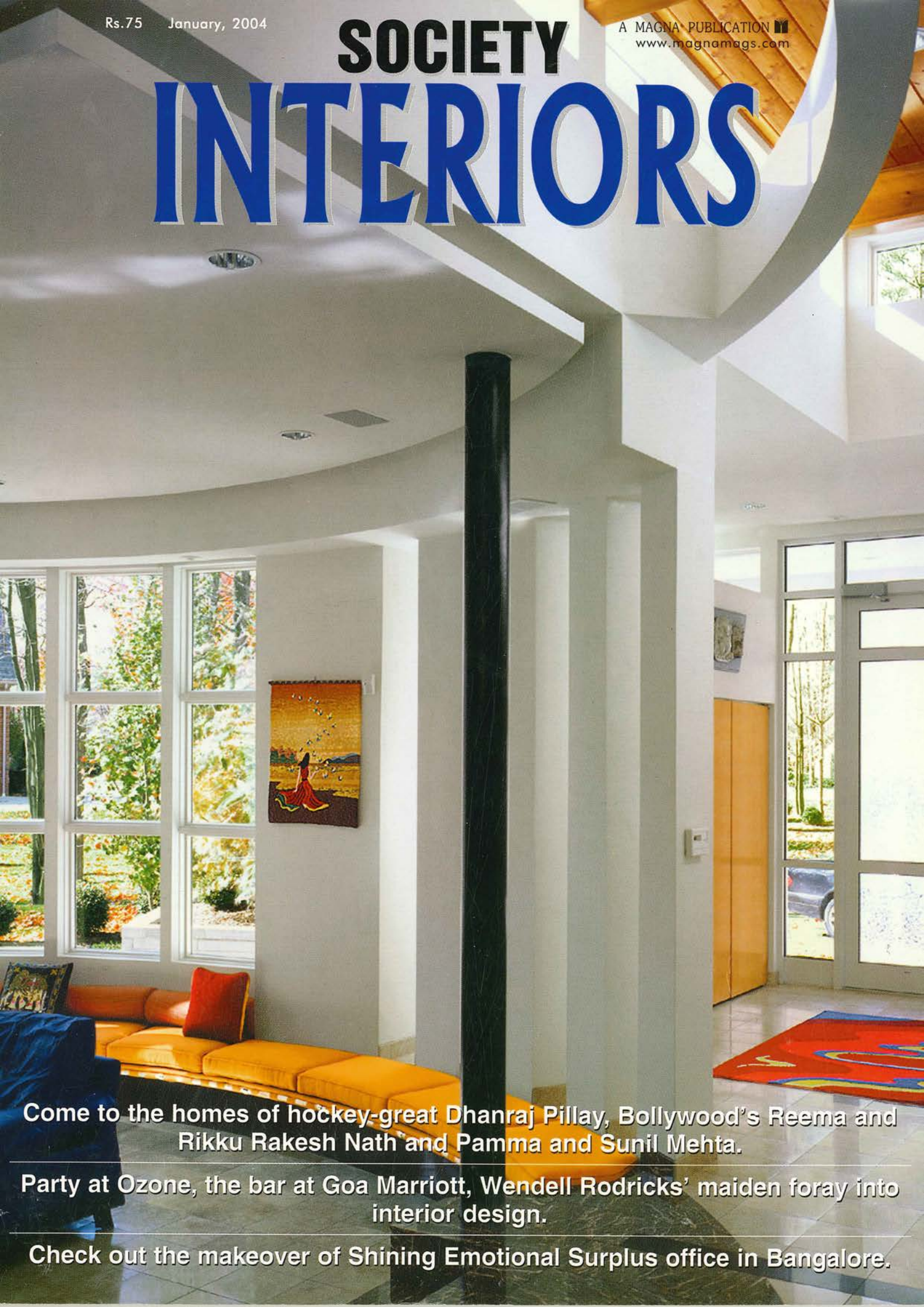


INTERIORS



Come to the homes of hockey-great Dhanraj Pillay, Bollywood's Reema and Rikku Rakesh Nath and Pamma and Sunil Mehta.

Party at Ozone, the bar at Goa Marriott, Wendell Rodricks' maiden foray into interior design.

Check out the makeover of Shining Emotional Surplus office in Bangalore.

Managing Editor

Nari Hira

Editor

Rupali Sebastian

Joint Editor

Babita Krishnan

Bureau Chiefs

Shashi Sunny (Delhi/U.P.); Nandini R. Penna (Andhra Pradesh);
Nirmala Ravindran (Karnataka); C.S.S. Latha (Tamil Nadu)

Correspondents

Swati G Balgi, Deepa Nair (Mumbai);
Sumita Sengupta (Delhi/U.P.); Kakoli Poddar,
Sudeshna Chakravarty (West Bengal);
J. Rajasekharan Nair (Kerala); Prashant Rane,
Martin DeSouza (New York); Rajnish Apte (London)

Editorial Co-ordinator

Arul Kennedy

Design Director

Tushar Upadhye

Computer Designing

Jaykanth Victor, J. George Willington, Norbert D'Souza,
Sanjay Angchekar, Nilesh Jawkar, Pradeep Menon,
T.V. Sugeesh, Valerian D'Souza, Dinesh Ingle

Advertising Director

Ashok Dhamankar

Advertising Manager

Sunil Khavnekar

Advertising Executive

Vishwanath Shanbhag

Circulation

Raghu G. Kotian

MUMBAI

Magna Publishing Co. Ltd.,

Magna House, 100/E, Old Prabhadevi Road, Prabhadevi,

Mumbai — 400 025, Tel: Editorial: 022-2436 2270

Advertising: 022-2437 4252, Fax: 022-2430 6523

E-mail: interiors@magnamags.com

NEW DELHI

Magna Publishing Co. Ltd.,

1501 A&B, Devika Towers, 6, Nehru Place, New Delhi — 110 019,

Tel: 011-2628 6830, 2600 2197/2209, 2644 2454/2473, 2647 5334,

Fax: 011-26286829

E-mail: magnadel@vsnl.com

KOLKATA

Magna Publishing Co. Ltd.,

4th floor, Avantika Apartments, 140-B, Sarat Bose Road,

Kolkata — 700 029, Tel: 033-2474 8165,

2475 3846, 2476 8874, 2476 8875, Fax: 033-2475 3705

E-mail: magnakal@vsnl.com

BANGALORE

Magna Publishing Co. Ltd.,

1107, Barton Centre, 84/1, M.G. Road, Bangalore 560 001

Tel : 080-5599646/7/8, 5594604, Fax : 080-5586567

E-mail: magnabang@vsnl.com

PUNE

Magna Publishing Co. Ltd.,

402, Road No. 5, Sindh Co-op Housing Society, Aundh,

Pune — 411 007, Tel: 020-25880696, 25881696, Fax: 020-25884796

E-mail: magnapune@vsnl.net

CHENNAI

Magna Publishing Co. Ltd.,

B/4, 1st Floor, 75, C.P. Ramaswamy Road, Alwarpet,

Chennai - 600 018, Tel: 044-24996752, Tel/Fax: 24996501

E-mail: magnachennai@vsnl.net

HYDERABAD

Magna Publishing Co. Ltd.,

193, Road No. 7, West Marredpally, Secunderabad — 500 026,

Tel: 040-27807642, Telex: 040-2780 0154

LONDON

Magna Publishing Co. UK Ltd.,

Wembley Point, 2nd Floor, 1 Harrow Road,

Wembley, Middlesex, HA9 6DE

Tel: 020 8795 5318

Fax: 020 8795 5328

NEW YORK

Magna Publishing Co. Ltd.,

165, Madison Avenue, Suite-302, New York, N.Y. — 10016,

Tel: (212) 725 7833 Fax: (212) 889 3250

AWARDS and rewards, conferences and conventions.....that is how we said goodbye to 2003. The tail end of the year was so full of activity that getting the first issue of the year out in time seemed a bit difficult. But, all that notwithstanding, here we are wishing you a very happy New Year with the very first issue of 2004 that will, I'm sure, be better than the last.

Though what could be better than the most talked-about event (or should I say mega-event) for India in general and the design fraternity in particular — Design Sutra. This International Congress hosted by IILD on behalf of the International Federation of Interior Architects/Designers saw the coming together of many respected names from the fraternity (and some not from it). The informative presentations and talks brought home the fact that architects and interior designers are probably the most important persons in our lives as our comfort (at the very basic level) depends on them.

Talking of international designers takes me to the cover story which is a home designed by Jayesh Hariyani, an Indian architect based in the US. While celebrating the bold architecture of this modern dwelling, one cannot not appreciate how the Moorthys have retained the old structure of their home in Goa and how the rich and the famous of Bollywood have broken away from meretricious interiors for subtlety. And, of course, we have the modest and warm home of Dhanraj Pillay for you. Also in this gallimaufry you can boogie at Ozone, the bar designed by Wendell Rodricks, admire what colour and a few innovative touches can do to change the face of old ungainly structures through the Shining Emotional Surplus office in Bangalore and much much more.

Before signing off, let me also tell to start looking forward to the much-awaited second Durian Society Interiors Design Awards, for which the students are already hard at work. Invitations will be on the way soon and for those of you who cannot keep the date, we shall give you the details post event.

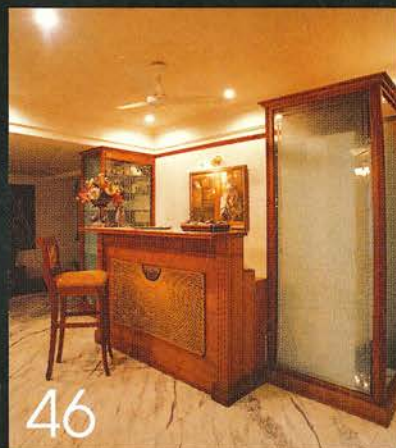
While we tighten our belts for some more late nights (work-related of course), you go on and enjoy this issue. We hope it sets the mood for the year to come....

Be Good.

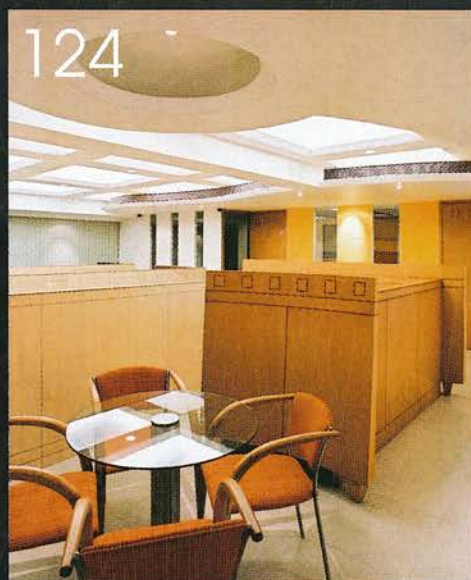
Babita



134



46



124



120

67 BRASSTACKS

A close look at the world of veneers and laminates.

82 PERSONAL STYLE

The personal stamp is evident in the homes of each of these proud homeowners: simplicity marks Dhanraj Pillay's apartment in Pune; contemporary preferences characterize Ashwin Srinivasan's suite of rooms in Chennai; while classic European nuances distinguish Reema and Rikku Rakesh Nath's abode in Mumbai.

102 STYLE PARADE

Are the offerings from The Orange Lane exquisite pieces of furniture or art installations? You decide.

106 INDIA ABROAD

Designed by Jayesh Hariyani, Dr. Sheth's home in USA is in harmony with its surrounding.

112 MAKEOVER

An old and dull factory is transformed into an energizing office for Shining Emotional Surplus in Bangalore.

120 HOTSPOT

Fashion-guru Wendell Rodricks' brush with designing spaces results in Ozone, the bar at Goa Marriott.

124 WORKSTATION

With Vastu as their guide, Laxminarayan and Isha Narayan create a modern office for Driplex Water Engineering in Mumbai.

130 SMALL WONDER

The design-craftiness of Bhavya and Nilesh Kenkare make a small apartment visually large and expansive.

134 SHOPPER'S STOP

Buy your dream car in the luscious environs of Pasco Automobiles in Delhi.

142 EATING OUT

Trailing vines on the floor, brocade panels on the ceiling, burnt-wood with carved leaf motifs...Gormoh's delights are not restricted only to the taste buds.

146 SHOWCASE

Studio Seasons, the high-quality furnishing store in South Mumbai.

148 INFORMATION

A dekko at Urban Spaces, India's first speciality mall for the designing fraternity, floated by Deepak Fertilisers and conceptualized by Kamal Malik.

150 PRIVATE EYE

Architect-interior designer Lalit Hira feels that there are no discernable trends in interior styles, that each person is a trend in himself.

153 TALKING SHOP

Catch up with what's new and latest in the market.

158 BOOK WISE

S Dave reviews *Shigeru Ban* by Matilda McQuaid.



Sublime Dwelling

Across the seven seas, architect Jayesh Hariyani, creates a modern dwelling for DR. SHETH in USA.

WHENEVER an architect creates with a free mind, the results are stupendous and joy-giving, not only for the owners but for all who come upon it, by invitation or chance. This holds true for this 6,500 sq. ft. home of Dr. Sheth in Pittsburgh, USA.

The requirement given to architect Jayesh Hariyani of BHKR Associates specified a house which would met all the personal and social

The living or the great room with its circular forms and large windows has plenty of sunlight. Absence of heavy ornamentation makes the area look spacious. (inset) The façade of Dr. Sheth's residence extends a glowing welcome in the evenings.



requirements of this family. The four-bedroom home has been hence divided into various areas: a formal living or great room, a dining area, a kitchen, a store, a family room, a powder room, a service room, a master suite, a children's bedroom, two guest rooms, a puja room and a three-car parking. There are no fixed design norms as one space effortlessly flows into the other.

"This home was designed around modern principles of architecture with clean, strong geometric shapes and forms," says Jayesh summing up the entire design in just the right words. The functional, visual spine draws you from the foyer through the house to

(left) The entrance passage along the great room follows the curvaceous pattern. (below) The simple and functional dining room imparts an elegant air. The no-frills decor adds to the look.



(right) The bedrooms are a showcase of stylish elegance — the main client demand. (below) The bathroom, too, continues the simple elegance of the house.



the lower level, which leads to the social area. Functional spaces branch off on either side of the spine — which acts as a visual divider between the openness of the public portion and the intimacy of the private quarters. This dramatically lit environment was created to excite and entertain visitors. The circular family room eliminates hard corners and flows into the outside with large southern exposed windows. The design of this home welcomes visitors with the lower level floor plan providing separate living quarters and entertainment area for houseguests.

The design reflects the client's desire for boldness in architecture, yet celebrates the natural wooded rolling hills of Western Pennsylvania. ■

Text: Shabana Durrani

Photographs: Massery Photography; courtesy the architect

Project : Doctor's Residence

Pittsburgh, PA, USA

Constructed Area: 6,500 sq. ft.

Designer and project architect: Jayesh Hariyani

Firm: BHKR Associates

Civil Engineers/Contractors: GBI Construction

MEP Engineers: Burt Hill

Structural Engineers: GBI Construction

Lighting: Malarik Electric